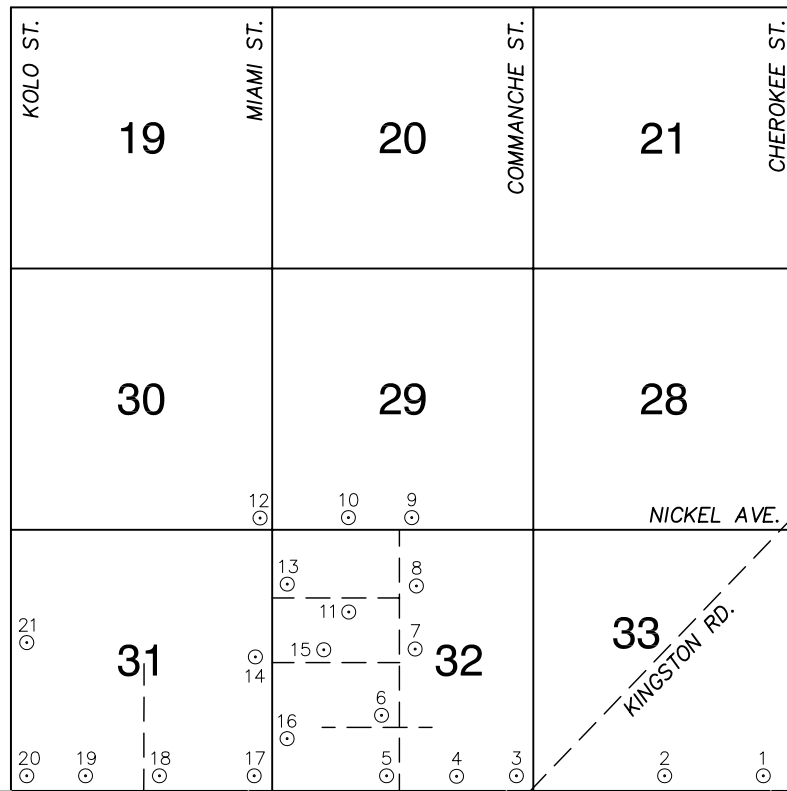


Township 24 South, Range 57 East Southwest Quarter



NORTH AMERICAN VERTICAL
DATUM OF 1988
- ALL ELEVATIONS IN METERS -

No.	STATION	ELEVATION (METERS)	DESCRIPTION
1	4C47 33SES 2004	846.036	RIVET AND ROUND ALUMINUM PLATE IN CONCRETE CYLINDER, NORTHWEST QUADRANT OF QUARTZ AVE. AND CHEROKEE ST. (SOUTH).
2	4C47 33S4 2004	835.481	RIVET AND ROUND ALUMINUM PLATE IN CONCRETE CYLINDER, NORTH SIDE OF QUARTZ AVE., 1/2 MILE WEST OF CHEROKEE ST. (SOUTH).
3	4C47 32SES 2004	823.065	RIVET AND ROUND ALUMINUM PLATE IN CONCRETE CYLINDER, NORTHEAST QUADRANT OF QUARTZ AVE. AND COMMANCHE ST. (SOUTH), ± 150' WEST OF KINGSTON RD.
4	4C47 32SSE6 2004	815.696	RIVET AND ROUND ALUMINUM PLATE IN CONCRETE CYLINDER, NORTHWEST QUADRANT OF QUARTZ AVE. AND CREE ST. (SOUTH), 1' EAST OF GUY WIRE.
5	4C47 32S4 2004	810.695	RIVET AND ROUND ALUMINUM PLATE IN CONCRETE CYLINDER, NORTHWEST CORNER OF QUARTZ AVE. AND HOPI ST. (NORTH).
6	4C47 32S6 2004	819.472	RIVET AND ROUND ALUMINUM PLATE IN TOP OF CURB, EAST SIDE OF MIDDLE ENTRANCE TO SANDY VALLEY ELEMENTARY SCHOOL PARKING LOT, NORTH SIDE OF PEARL AVE., ± 150' WEST OF HOPI ST.
7	4C47 32C4 2004	830.751	RIVET AND ROUND ALUMINUM PLATE IN CONCRETE CYLINDER, NORTHEAST QUADRANT OF HOPI ST. AND ONYX AVE.
8	4C47 32N6 2004	840.635	RIVET AND ROUND ALUMINUM PLATE IN CONCRETE CYLINDER, NORTHEAST QUADRANT OF HOPI ST. AND OBSIDIAN AVE.
9	4C47 29S4 2004	850.731	RIVET AND ROUND ALUMINUM PLATE IN CONCRETE CYLINDER, NORTHEAST QUADRANT OF HOPI ST. AND NICKEL AVE.
10	4C47 29SSW6 2004	839.182	RIVET AND ROUND ALUMINUM PLATE IN CONCRETE CYLINDER, NORTHEAST QUADRANT OF NICKEL AVE. AND INCA ST.
11	4C47 32NW6 2004	829.154	RIVET AND ROUND ALUMINUM PLATE IN CONCRETE CYLINDER, SOUTHEAST QUADRANT OF INCA ST. AND OBSIDIAN AVE., NEAR THE BASE OF A GUY WIRE.

CLARK COUNTY VERTICAL CONTROL v.2003

CLARK COUNTY SURVEYOR'S OFFICE
5051 SOUTH PARADISE ROAD
LAS VEGAS, NEVADA 89119
(702) 455-0640

CONVERSION FACTOR:
METERS X $\left(\frac{3937}{1200}\right)$ = U.S. SURVEY FEET

REVISED 02/14/2005	SHEET 1 OF 2	24-57 SW
-----------------------	-----------------	-------------

No.	STATION	ELEVATION (METERS)	DESCRIPTION	No.	STATION	ELEVATION (METERS)	DESCRIPTION
12	4C47 30SES 2004	828.143	SE T RIVET AND ROUND ALUMINUM PLATE IN CONCRETE CYLINDER, NORTHWEST QUADRANT OF NICKEL AVE. AND MIAMI ST., ± 75' NORTHWEST OF THE END OF PAVEMENT.	25			
13	4C47 32NWW6 2004	821.312	SE T RIVET AND ROUND ALUMINUM PLATE IN CONCRETE CYLINDER, NORTHEAST CORNER OF MIAMI ST. AND OBSIDIAN AVE., 6' EAST OF POWER POLE.	26			
14	4C47 31E4 2004	813.753	SE T RIVET AND ROUND ALUMINUM PLATE IN CONCRETE CYLINDER, NORTH SIDE OF ONYX AVE., ± 100' WEST OF MIAMI ST., NEAR THE BASE OF A POWER POLE WITH GUY WIRE.	27			
15	4C47 32W6 2004	821.403	SE T RIVET AND ROUND ALUMINUM PLATE IN CONCRETE CYLINDER, NORTHWEST QUADRANT OF ONYX AVE. AND THE INCA ST. ALIGNMENT, AT THE BASE OF A POWER POLE, NEAR A WIRE FENCE.	28			
16	4C47 32SWW6 2004	807.574	SE T RIVET AND ROUND ALUMINUM PLATE IN CONCRETE CYLINDER, SOUTHEAST QUADRANT OF THE PEARL AVE. ALIGNMENT AND MIAMI ST., AT THE BASE OF A POWER POLE WITH GUY WIRE.	29			
17	4C47 31SES 2004	802.900	SE T RIVET AND ROUND ALUMINUM PLATE IN CONCRETE CYLINDER, NORTH SIDE OF QUARTZ AVE., ± 225' WEST OF MIAMI ST. (NORTH), AND ± 50' EAST OF MIAMI ST. (SOUTH), 3' WEST OF A POWER POLE.	30			
18	4C47 31S4 2004	799.034	SE T RIVET AND ROUND ALUMINUM PLATE IN CONCRETE CYLINDER, NORTHEAST CORNER OF QUARTZ AVE. AND MOJAVE ST. (NORTH), 2' SOUTH OF POWER POLE.	31			
19	4C47 31SSW6 2004	798.205	SE T RIVET AND ROUND ALUMINUM PLATE IN CONCRETE CYLINDER, NORTH SIDE OF QUARTZ AVE., ± 150' WEST OF ARTESIA ST. (SOUTH), 3' NORTHWEST OF A POWER POLE.	32			
20	4C47 31SWS 2004	798.514	SE T RIVET AND ROUND ALUMINUM PLATE IN CONCRETE CYLINDER, NORTHEAST CORNER OF QUARTZ AVE. AND KOLO ST. (NORTH), 2' EAST OF POWER POLE.	33			
21	4C47 31W4 2004	805.372	SE T RIVET AND ROUND ALUMINUM PLATE IN CONCRETE CYLINDER, NORTHEAST QUADRANT OF KOLO ST. AND ONYX AVE., 3' NORTH OF POWER POLE.	34			
22				35			
23				CLARK COUNTY VERTICAL CONTROL v.2003			
24				CLARK COUNTY SURVEYOR'S OFFICE 5051 SOUTH PARADISE ROAD LAS VEGAS, NEVADA 89119 (702) 455-0640		CONVERSION FACTOR: METERS X $\left(\frac{3937}{1200}\right)$ = U.S. SURVEY FEET	
				REVISED 02/14/2005	SHEET 2 OF 2	24-57 SW	